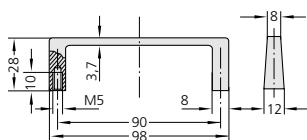
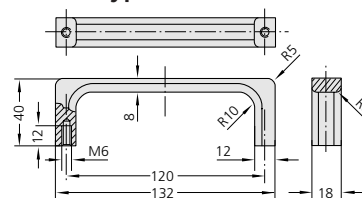


**MG**

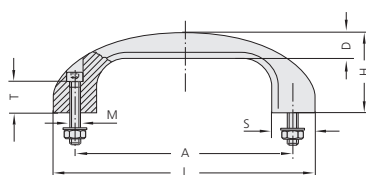
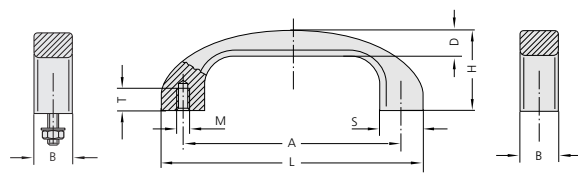
**Description** - Profiled handle.  
 Material - aluminium.  
 Finish - matt anodised, white powder coated.

**Type MG-01****Type MG-02**

	Type MG-01	Type MG-02
	Order no.	Order no.
silver	MG-01.090.01	MG-02.120.01
black	MG-01.090.04	MG-02.120.04
white	-	MG-02.120.9002

**AB**

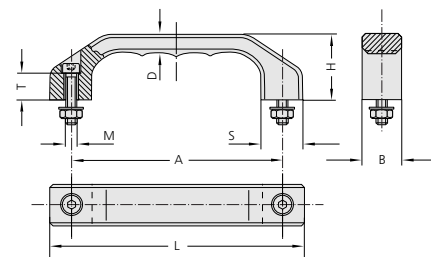
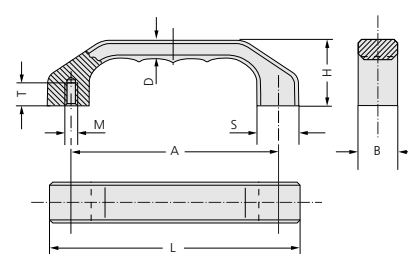
**Description** - Bowed profiled handle with front and rear fixing options.  
 Material - aluminium.  
 Finish - satin anodised, white powder coated.

**Type AB-F****Type AB-R**

A	silver Order no.	black Order no.	white Order no.	M	T	L	H	B	D	S
120	AB-22.F120.11	AB-22.F120.14	-	6x25	15	144	46	22	15	24
	AB-22.R120.11	AB-22.R120.14	AB-22.R120.9002	6	12					
140	AB-25.F140.11	AB-25.F140.14	-	8x30	15	168	53	25	17	28
	AB-25.R140.11	AB-25.R140.14	AB-25.R140.9002	8	15					

**AG**

**Description** - Solid industrial handle with front and rear fixing options.  
 Material - aluminium.  
 Finish - satin anodised, white powder coated.

**Type AG-F****Type AG-R**

A	silver Order no.	black Order no.	white Order no.	M	T	L	H	B	D	S
120	AG-22.F120.11	AG-22.F120.14	-	6x25	15	146	39	22	10,5	24
	AG-22.R120.11	AG-22.R120.14	AG-22.R120.9002	6	12					
140	AG-25.F140.11	AG-25.F140.14	-	8x30	16	170	45	25	12	28
	AG-25.R140.11	AG-25.R140.14	AG-25.R140.9002	8	15					
160	AG-28.F160.11	AG-28.F160.14	-	8x35	20	194	52	28	13,5	32
	AG-28.R160.11	AG-28.R160.14	AG-28.R160.9002	8	15					

All dimensions in mm.