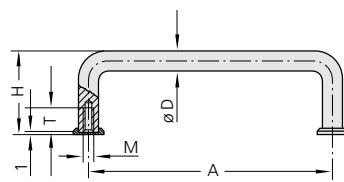




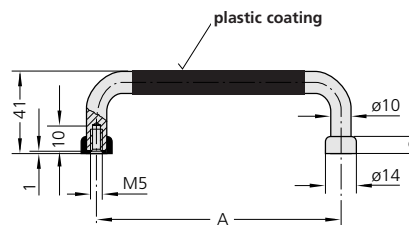
**Description** - Bar handle in 5, 8 and 10mm diameters with dress rings.  
 Material - steel.  
 Surface finish - chrome plate.



| A   | Order no.    | D  | H  | M | T  |
|-----|--------------|----|----|---|----|
| 32  | ST-05.032.22 | 5  | 21 |   |    |
| 42  | ST-05.042.22 |    |    |   |    |
| 55  | ST-05.055.22 |    |    |   |    |
| 76  | ST-05.076.22 | 5  | 25 | 3 | 6  |
| 88  | ST-05.088.22 |    |    |   |    |
| 32  | ST-08.032.22 |    |    |   |    |
| 55  | ST-08.055.22 |    |    |   |    |
| 64  | ST-08.064.22 |    |    |   |    |
| 88  | ST-08.088.22 |    |    |   |    |
| 96  | ST-08.096.22 | 8  | 33 | 4 | 8  |
| 98  | ST-08.098.22 |    |    |   |    |
| 102 | ST-08.102.22 |    |    |   |    |
| 120 | ST-08.120.22 |    |    |   |    |
| 128 | ST-08.128.22 |    |    |   |    |
| 136 | ST-08.136.22 |    |    |   |    |
| 55  | ST-10.055.22 |    |    |   |    |
| 88  | ST-10.088.22 |    |    |   |    |
| 100 | ST-10.100.22 |    |    |   |    |
| 102 | ST-10.102.22 |    |    |   |    |
| 115 | ST-10.115.22 |    |    |   |    |
| 120 | ST-10.120.22 | 10 | 41 | 5 | 10 |
| 136 | ST-10.136.22 |    |    |   |    |
| 180 | ST-10.180.22 |    |    |   |    |
| 200 | ST-10.200.22 |    |    |   |    |
| 235 | ST-10.235.22 |    |    |   |    |
| 250 | ST-10.250.22 |    |    |   |    |



**Description** - Bar handle with plastic grip and dress rings.  
 Material - steel.  
 Surface finish - matt chrome plate.



| A   | Order no.    |
|-----|--------------|
| 55  | SS-10.055.28 |
| 88  | SS-10.088.28 |
| 100 | SS-10.100.28 |
| 102 | SS-10.102.28 |
| 115 | SS-10.115.28 |
| 120 | SS-10.120.28 |
| 136 | SS-10.136.28 |
| 180 | SS-10.180.28 |
| 200 | SS-10.200.28 |
| 235 | SS-10.235.28 |
| 250 | SS-10.250.28 |