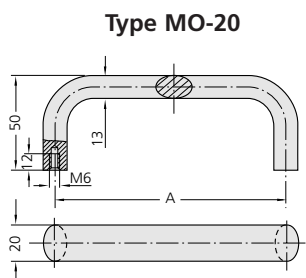


MO

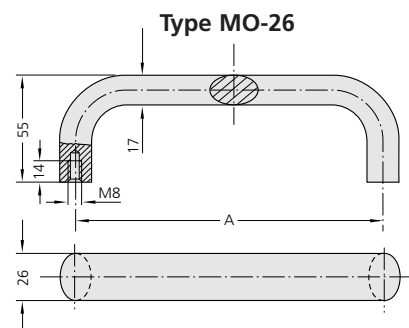


Description - Heavy duty bar handle.
 Material - aluminium.
 Surface finish - silver & black anodised, fine texture black epoxy and white epoxy.



Handle type MO-20

A		Order no.
100	silver	MO-20.100.01
	black painted	MO-20.100.04
	white	MO-20.100.54
112	silver	MO-20.112.01
	black painted	MO-20.112.04
	white	MO-20.112.54
120	silver	MO-20.120.01
	black painted	MO-20.120.04
	white	MO-20.120.54
128	silver	MO-20.128.01
	black painted	MO-20.128.04
	white	MO-20.128.54
	white	MO-20.128.9002
160	silver	MO-20.160.01
	black painted	MO-20.160.04
	white	MO-20.160.54
	white	MO-20.160.9002



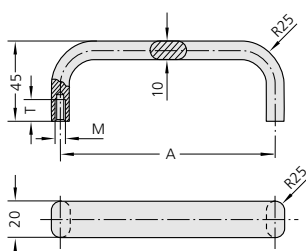
Handle type MO-26

A		Order no.
112	silver	MO-26.112.01
	black painted	MO-26.112.04
	white	MO-26.112.54
120	silver	MO-26.120.01
	black painted	MO-26.120.04
	white	MO-26.120.54
128	silver	MO-26.128.01
	black painted	MO-26.128.04
	white	MO-26.128.54
160	silver	MO-26.160.01
	black painted	MO-26.160.04
	white	MO-26.160.54
	white	MO-26.160.9002
180	silver	MO-26.180.01
	black painted	MO-26.180.04
	white	MO-26.180.54
	white	MO-26.180.9002
192	silver	MO-26.192.01
	black painted	MO-26.192.04
	white	MO-26.192.54
	white	MO-26.192.9002
350	silver	MO-26.350.01
	black painted	MO-26.350.04
	white	MO-26.350.54
	white	MO-26.350.9002

MF



Description - Flat oval bar handle.
 Material - aluminium.
 Surface finish - matt anodised.



A	silver	black	M	T
	Order no.	Order no.		
120	MF-20.120.01	MF-20.120.04	5	10
140	MF-20.140.01	MF-20.140.04		
180	MF-20.180.01	MF-20.180.04		
200	MF-20.200.01	MF-20.200.04		
350	MF-20.350.01	MF-20.350.04	6	12

All dimensions in mm.