



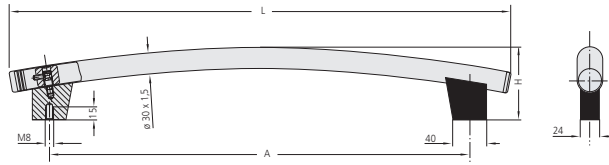
Version 1

Version 2

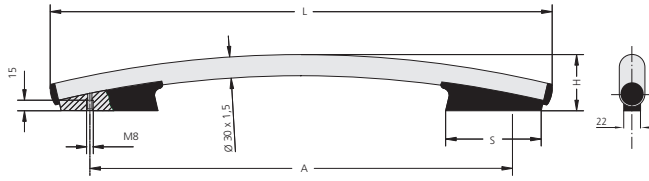
Description - Curved tube machine handles with optional end caps.

Material - version 1 has steel end caps and aluminium tube holders that are fine textured powder coated, version 2 has black anodised tube holders and black plastic caps.

Version 1



Version 2



Version 1

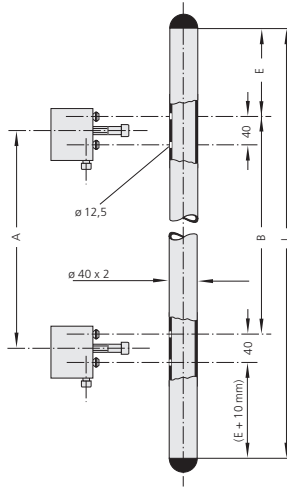
Version 2

| A | L | H | Order No. | A | L | H | S | Order no. |
|-----|-----|-----|---------------|-----|-----|----|-----|---------------|
| 500 | 600 | 90 | GM-30.A500.33 | 500 | 613 | 73 | 112 | GM-30.B500.33 |
| 600 | 700 | 100 | GM-30.A600.33 | 600 | 713 | 80 | 136 | GM-30.B600.33 |



Description - Heavy duty pipe handle with multiple fixing positions. Additional fasteners and end caps can be purchased for custom options.

Material - pipe-stainless steel 40mm. Fasteners-die cast aluminium epoxy painted. End cap-glass reinforced plastic.



Standard handles

| L | Order no. | A | B | E |
|------|--------------|-----|-----|-----|
| 600 | U2-40.380.37 | 380 | 380 | 85 |
| 700 | U2-40.480.37 | 480 | 480 | 85 |
| 800 | U2-40.500.37 | 500 | 500 | 125 |
| 900 | U2-40.600.37 | 600 | 600 | 125 |
| 1000 | U2-40.700.37 | 700 | 700 | 125 |

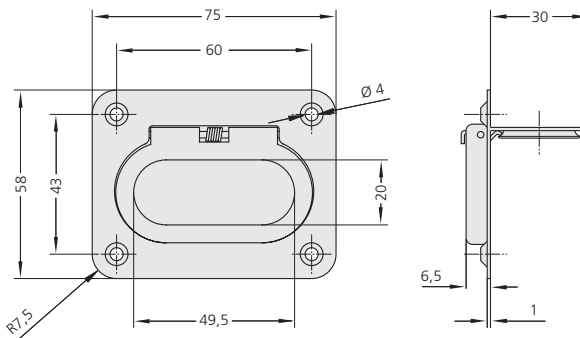
Single components

| | Order no. |
|--------------------|----------------|
| Fastener*, 1 piece | U2-40.00H.54 |
| End cap, 1 piece | RK-PA.040.9005 |

* with installation screw and nut



Description - Collapsible stainless steel handle with shallow insertion.



Order no.

EE-43.R060.39