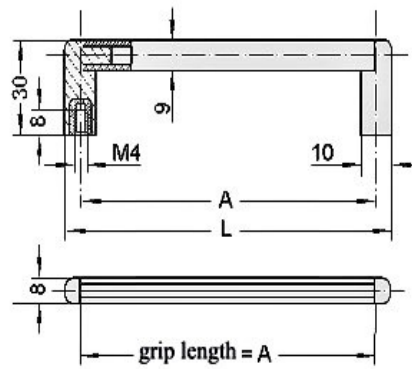


UG



Description - 3 part construction handle for lighter duty requirements.
Material - Aluminium grip, polyamide glass reinforced shanks.
Surface finish- Fine grained.

Typ UG-01



A	L	Order No Silver	Order No Black
32	42	UG-01.032.01	UG-01.032.04
55	65	UG-01.055.01	UG-01.055.04
62	72	UG-01.062.01	UG-01.062.04
86	96	UG-01.086.01	UG-01.086.04
88	98	UG-01.088.01	UG-01.088.04
90	100	UG-01.090.01	UG-01.090.04
120	130	UG-01.120.01	UG-01.120.04
134	144	UG-01.134.01	UG-01.134.04

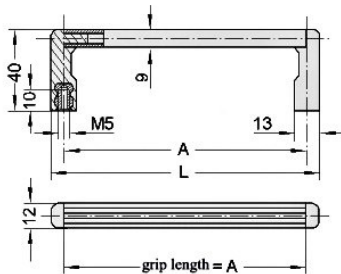
UG



Description - 3 part construction handle, manufactured to suit differing loads, see individual details.
Material - aluminium grip, polyamide glass reinforced shanks.
Surface finish- Fine grained

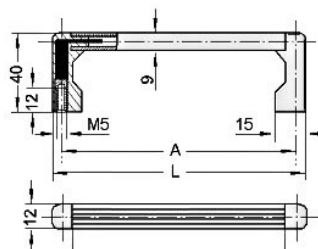
A	L	Order No	Order No	Order No
29	43	Silver UG-02.029.01	-	-
29	43	Black UG-02.029.04	-	-
55	69	Silver UG-02.055.01	UG-03.055.01	UG-04.055.01
55	69	Black UG-02.055.04	UG-03.055.04	UG-04.055.04
73.5	87.5	Silver UG-02.073.01	UG-03.073.01	UG-04.073.01
73.5	87.5	Black UG-02.073.04	UG-03.073.04	UG-04.073.04
132.5	102	Silver UG-02.088.01	UG-03.088.01	UG-04.088.01
132.5	102	Black UG-02.088.04	UG-03.088.04	UG-04.088.04
132.5	114	Silver UG-02.100.01	UG-03.100.01	UG-04.100.01
132.5	114	Black UG-02.100.04	UG-03.100.04	UG-04.100.04
118	132	Silver UG-02.118.01	UG-03.118.01	UG-04.118.01
118	132	Black UG-02.118.04	UG-03.118.04	UG-04.118.04
120	134	Silver UG-02.120.01	UG-03.120.01	UG-04.120.01
120	134	Black UG-02.120.04	UG-03.120.04	UG-04.120.04
176.5	162.5	Silver UG-02.162.01	UG-03.162.01	UG-04.162.01
162.5	176.5	Black UG-02.162.04	UG-03.162.04	UG-04.162.04
162.5	176.5	Silver UG-02.180.01	UG-03.180.01	UG-04.180.01
162.5	176.5	Black UG-02.180.04	UG-03.180.04	UG-04.180.04
235	249	Silver UG-02.235.01	UG-03.235.01	UG-04.235.01
235	249	Black UG-02.235.04	UG-03.235.04	UG-04.235.04

Typ UG-02



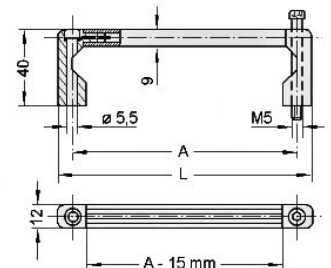
For rear screw fixing.
 Handle shank reinforced with brass inserts for up to 200N loading per handle.

Typ UG-03



For rear screw fixing.
 Handle shank reinforced with steel core for up to 500N loading per handle.

Typ UG-04



For front screw fixing using M5 cap head screws.
 For up to 500 N loading per handle.