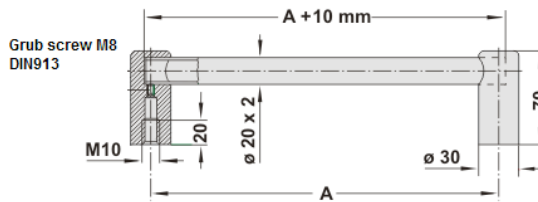


VG

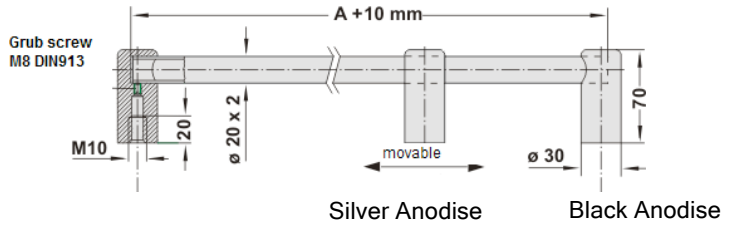


Description - Tube Handle.
 Material - Aluminium anodised tubes and shanks.
 Surface finish- Tubes ground & anodised shanks shot blasted and anodised.

Type VG-01



Type VG-02



Silver Anodise

Black Anodise

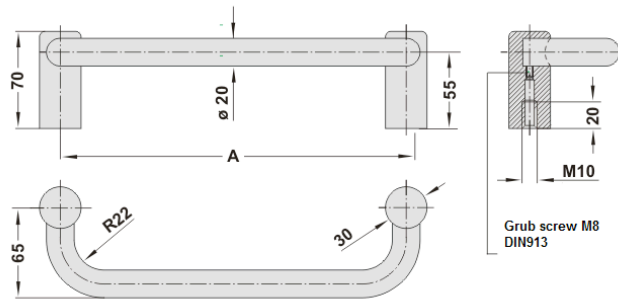
A	Shank Colour	Order No	Order No
250	Silver	VG-01.250.N01	VG-01.250.N04
250	Black	VG-01.250.S01	VG-01.250.S04
300	Silver	VG-01.300.N01	VG-01.300.N04
300	Black	VG-01.300.S01	VG-01.300.S04
400	Silver	VG-01.400.N01	VG-01.400.N04
400	Black	VG-01.400.S01	VG-01.400.S04
500	Silver	VG-01.500.N01	VG-01.500.N04
500	Black	VG-01.500.S01	VG-01.500.S04
500	Silver	VG-02.500.N01	VG-02.500.N04
500	Black	VG-02.500.S01	VG-02.500.S04
600	Silver	VG-02.600.N01	VG-02.600.N04
600	Black	VG-02.600.S01	VG-02.600.S04
800	Silver	VG-02.800.N01	VG-02.800.N04
800	Black	VG-02.800.S01	VG-02.800.S04

VG



Description- Tube handle.
 Material - Aluminium anodised tubes and shanks.
 VG-04 Steel tubes.
 Surface finish- Tubes ground & anodised shanks shot blasted and anodised
 VG-04 Tubes matt chrome

Type VG-03
 Type VG-04



Natural Anodise Tube

Black Anodise Tube

A	Shank Colour	Order No	Order No
250	Natural	VG-03.250.N11	VG-03.250.N14
	Black	VG-03.250.S11	VG-03.250.S14
350	Natural	VG-03.350.N11	VG-03.350.N14
	Black	VG-03.350.S11	VG-03.350.S14

Anodised aluminium shanks, matt chrome plated
 Steel tubes

A	Shank Colour	Order No
250	Black	VG-04.250.S27
350	Black	VG-04.350.S27